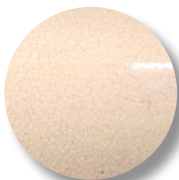




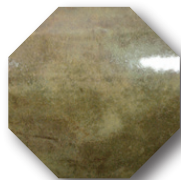
RAKU *for traditional raku firings*



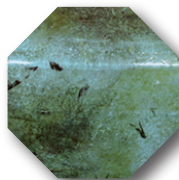
R-10
Clear Crackle



R-11
White Crackle



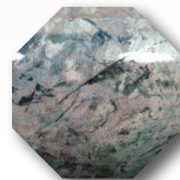
R-17
Tarnished Silver



R-13
Smokey Blue



R-12
Bluebell



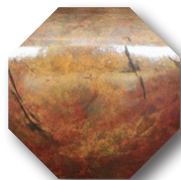
R-14
Smokey Lilac



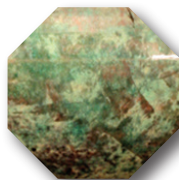
R-21
Yellow Crackle



R-20
Red Crackle



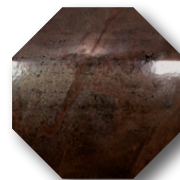
R-16
Copper Patina



R-15
Caribbean Blue



R-18
Lustrous Copper



R-19
Copper Matte



Conforms to
ASTM D-4236



Conforms to
ASTM D-4236



Not Dinnerware
Safe



Safe for Spray
Application

* AP glazes
safe for spray
application